

SR200 X-ray Irradiator

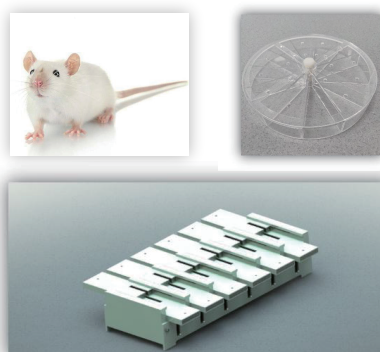


Technical Features

- Excellent performance X-ray tube and generator.
- No natural radioactivity, good choice for replacing Cs-137 irradiators.
- Self-shielding, no additional special shielding required.
- Touch screen control panel for easy operating.
- Built-in integrated cooling system ensures less floor space.
- Automatic programmable lifting shelf for convenient operating.
- Easy to replace the filters.

Application

SR200 can be used for irradiating different kinds of rats and mice, it is suitable for the research of oncology, immunology, genomics, microbiology etc.



Technical parameters

Type	SR200	
X-ray tube	Maximum voltage	225kV
	Maximum power	4500W
	Inherent filtration	2.0mm Beryllium
	Radiation coverage	40°
	service life time	≥2000h
Source to sample distance range		15-50cm
Dose rate (30cm SSD)	No filter	>19Gy/min
	2mm Al filter	>8.5Gy/min
	0.2mm Cu filter	>6Gy/min
Input power		8.5kW
Input voltage		AC 220V, 50Hz
Irradiation chamber dimension(H×W×D)		50×40×48cm
Cabinet dimension		120×88×185cm
Operating temperature range		5 °C ~30°C
Maximum relative humidity for operating		75%
Maximum environmental dose rate		≤1.0μSv/h
Option 1	Real-time Video of chamber module	
Option 2	Real-time dose rate measurement module	
Option 3	Automatic recognizing filter module	
Option 4	Mice cage customization	



Address: Building 3, International Wisdom Park, 2 Tenglong Road, West Taihu
Science and Technology Industrial Park, Changzhou City, Jiangsu Province, China
Tel: +86 13810957576 +86 13601333057
E-mail: business@sciray.com.cn
www.sciray.com.cn